

2-BEDROOM

TYPE (2)b

#02-07 to #04-07,
#06-07 to #23-07,
#25-07 to #43-07

64 sqm

Incl A/C Ledge 2 sqm
& Balcony 7 sqm

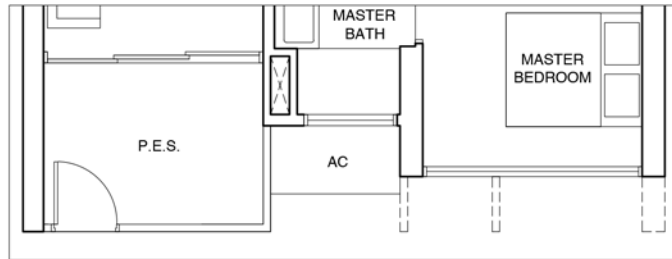


TYPE (2)b1

#01-07

64 sqm

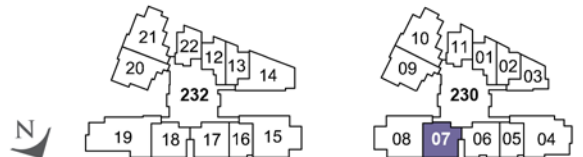
Incl A/C Ledge 2 sqm
& PES 7 sqm



Applicable to Type (2)b1 only

Fin at Levels:

- (A) 02, 06, 09, 12, 15, 18, 21, 25, 28, 31, 34, 37, 40, 43
- (B) 03, 04, 07, 08, 10, 11, 13, 14, 16, 17, 19, 20, 22, 23, 26, 27, 29, 30, 32, 33, 35, 36, 38, 39, 41, 42
- (C) 04, 08, 11, 14, 17, 20, 23, 27, 30, 33, 36, 39, 42
- (D) 02, 03, 06, 07, 09, 10, 12, 13, 15, 16, 18, 19, 21, 22, 25, 26, 28, 29, 31, 32, 34, 35, 37, 38, 40, 41, 43



LEGEND:

F - FRIDGE DB - DISTRIBUTION BOARD WC - WATER CLOSET W/D - WASHER CUM DRYER W - WASHER D - DRYER C - CABINET AC - AIRCON LEDGE

* THE BALCONY IN THE UNIT SHALL NOT BE ENCLOSED UNLESS WITH THE APPROVED BALCONY SCREEN.
FOR AN ILLUSTRATION OF THE APPROVED BALCONY SCREEN, PLEASE REFER TO THE LAST PAGE OF THIS BROCHURE.

ALL PLANS ARE SUBJECT TO CHANGE AS MAY BE REQUIRED OR APPROVED BY THE RELEVANT AUTHORITIES. INDICATED FLOOR AREAS ARE APPROXIMATE AND ARE SUBJECT TO FINAL SURVEY.